

## 20. ABOUT US

Driven by the passion for innovation, we at Dr Trust endeavour to provide our customers with the latest medical inventions with an objective to promote good health and wellness all around the world. All the medical devices and health monitors provided by Dr Trust are supported by accurate, latest and ground breaking technologies, innovated at our headquarters in NY, USA. All our products adhere to the most stringent CE and FDA guidelines and are strongly recommended by doctors and health practitioners. Our products are designed in the utmost exemplary ways to ensure that their accuracy and convenience are unrivalled. The ease of their use and operation makes them even more suitable for users of all age groups.

Dr Trust strives to enhance the quality of lifestyle by providing with the most trusted and innovative health care and wellness products. Being a renowned global leader in health care products, Dr Trust ensures that our technically efficient team works dynamically and tirelessly to provide the best of the medical devices to our clients. The products that we have to offer are suitably designed for use at homes, laboratories and hospitals.

Our ground breaking solutions allow you to monitor your health in the easiest ways possible. In today's era when all of our lives are too hassled to handle, it becomes a bit difficult to pay attention to our health. But it has now become easier with the coming of the monitoring devices which can be conveniently used at homes and even on the go.

**We bring to you a variety of best self medical devices, trusted and used by Doctors, medical professionals and home users all over the world.**



## MESH NEBULIZER-406



**USER  
INSTRUCTIONS**

**Please Visit [drtrustusa.com/406](http://drtrustusa.com/406) for quick startup guide**

Thank you for purchasing the Dr Trust Mesh Nebulizer 406. Before using the nebulizer for the first time, please read the instructions thoroughly and use it correctly. To further understand the device and suitable medications, please be sure to follow a doctor's instruction.

# TABLE OF CONTENTS



<b>1. INTRODUCTION</b>	<b>3</b>
<b>2. KEY COMPONENTS AND FUNCTIONS</b>	<b>3</b>
<b>3. SAFETY FEATURES OF THE NEBULIZER</b>	<b>4</b>
<b>4. IMPORTANT SAFETY INFORMATION</b>	<b>4</b>
• Instructions To be Followed Before Use	
• Instructions To be Followed For Safe Use	
• Instructions to Be Followed to Reduce the Risk of Electric Shock	
• Other Safety Instructions	
<b>5. PRECAUTIONS</b>	<b>6</b>
• Do Not Use if any of the Following Conditions Apply to You	
<b>6. HOW TO USE THE NEBULIZER</b>	<b>6</b>
• Power Supply	
• Assembling Nebulizer	
• Adding Medicine Liquid	
• Operation of Nebulizer	
<b>7. AFTER USE</b>	<b>10</b>
<b>8. CARE &amp; MAINTENANCE</b>	<b>10</b>
• Cleaning the Atomizing Cup	
• Main Unit	
• Accessories (mouthpiece and masks)	
• USB Charge Cable	
• Maintenance Instructions	
<b>9. STORAGE AND TRANSPORT</b>	<b>12</b>
• Storage & Transportation Conditions	
• Storage Instructions	
<b>10. TO PROTECT THE ENVIRONMENT</b>	<b>13</b>
<b>11. TROUBLESHOOTING</b>	<b>13</b>
<b>12. PRODUCT SPECIFICATIONS</b>	<b>15</b>
<b>13. THE NEBULIZER PASSED THE FOLLOWING STANDARD TEST</b>	<b>16</b>
<b>14. PACKAGE CONTENTS</b>	<b>18</b>
<b>15. CUSTOMER SUPPORT</b>	<b>19</b>
<b>16. ABOUT US</b>	<b>20</b>

## Indications for Use:



The Dr Trust Mesh Nebulizer 406 is designed to aerosolized liquid medications for inhalation by the patient. The device may be used with pediatric (>4 years of age) and adult patients in the home, hospital and sub-acute care settings.

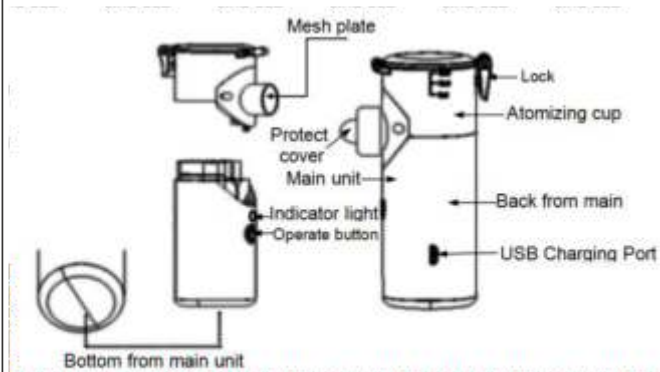
**Note:** It is not intended for use with Pentamidine.

## 1. INTRODUCTION

The Dr Trust Mesh Nebulizer-406 is a drug delivery device used to administer medication in the form of a mist inhaled directly into the lungs. It can be used for the treatment of respiratory diseases, respiratory tract infection prevention, asthma, COPD and other respiratory diseases or disorders. It is intended to aerosolize physician-prescribed solutions for inhalation that are approved for use with a general-purpose nebulizer. Moreover, it is an electrical device so; it should be used with special attention to safety. So please read all warnings and safety precautions before use, and strictly follow them when using ultrasonic mesh nebulizer.

## 2. KEY COMPONENTS AND FUNCTIONS

### Physical Components



Main Unit	Provide electricity.
Atomizing Cup	filled with medicine liquid
Mesh plate	Create low velocity aerosol
Operate button	Switch on or off unit/ select the mode of atomizing (larger flow rate or smaller flow rate), (Press and hold the button for 3 seconds to turn on the unit)
Indicator light	Blue light on when the nebulizer larger flow rate works regularly; Blue and green lights flicker alternately when the nebulizer smaller flow rate works regularly; Automatic turn off after Blue light flashes when the battery is running out electricity;
Indicator light	Blue lights flicker on when charging regularly; Green light on while finishing charging;
USB interface	Connect the nebulizer with the USB cable to 5V 1A power supply to recharge .

### 3. SAFETY FEATURES OF THE NEBULIZER

The Dr Trust Ultrasonic Mesh Nebulizer comes with several built-in safety features

#### Superior safety with lower voltage level

To protect user, the rated voltage of the device is 5v. The lithium battery is designed to be with protection mechanism which could avoid excessive charging or discharging, overheating and over-voltage. And the battery also meets the requirement of IEC 62133-2:2017 which is an international standard for battery.

#### No Medicine Liquid, No Atomization

When there is no medicine liquid in the atomization cup, no atomizer is used. Turn off the atomizer when there is no medicine liquid in the atomization cup. This could avoid overheating.

### 4. IMPORTANT SAFETY INFORMATION

#### Instructions To be Followed Before Use

- 1) The device cannot be applied to anesthesia breathing system and respiratory system.
- 2) children must be under adults' supervision.
- 3) Pentamidine is not applicable to the device.

#### Instructions To be Followed For Safe Use

- For type or dose of medicine, please follow the instructions of your physician and/or
- licensed healthcare practitioner.
- To prevent cross infection, the device is used only by single patient.
- Do not dry the device and its accessories with the microwave oven, oven drying, hair dryer, etc.
- Do not make the nebulizer and its accessories contact corrosive liquids or gases.
- Do not disassemble, repair or change the device.
- Please do not place the equipment in a difficultly operation position.
- Please be careful about strangulation due to cables and hoses, particularly due to excessive length.
- Always keep this device out of the reach of children.

#### Instructions to Be Followed to Reduce the Risk of Electric Shock

Electric shock may cause serious injury or death. To avoid, please follow the below given instructions;

- DO NOT use or store the device in humid locations, such as in a bathroom.
- Use the device within the operating temperature and humidity.
- DO NOT immerse the Main Unit in water or other liquid.

#### Other Safety Instructions

**Do NOT Use** the Medicine with ester, fat or suspended particles, including herbal medicine, suggest use the standard nebulizing Medicine in accordance with the physician's advice.

**Do NOT** Install the Main Unit around the power lines.

**Do NOT** Operate the device near the heating device or open fire.

**Do Not Use** the device before cleaning and disinfecting.

**Do Not Use** the device if your hands are wet.

**Do Not use** this device if your skin is sensitive to mouthpiece and masks.

**Do Not** allow service or maintenance the equipment while used in patient.

**Note: -**

- Accessories (mouthpiece and masks) could not be cross used.
- This device is approved for human use only. Use it only for its intended use.

## 5. PRECAUTIONS

Additional considerations are needed of using the Dr Trust Mesh Nebulizer safely. Please consider the following precautions to avoid minor or moderate injury and damage to your device:

**Do Not Use if any of the Following Conditions Apply to You**

- You have an active skin condition in the treatment area including, sores, psoriasis, eczema, sunburns, herpes simples, open wounds or a rash.
- You have any other conditions which in your doctor's opinion would make it unsafe for you to be treated.
- Keep this device out of reach of children.

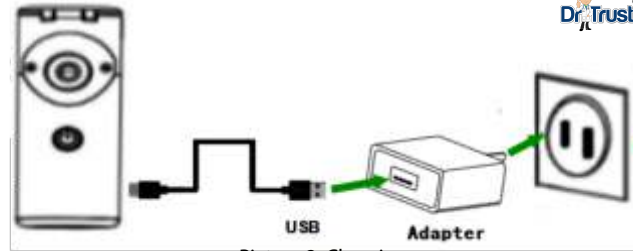
The patient is an intended operator and can perform the maintenance of the equipment. If any operator requests more information such as circuit diagrams, parts list and product descriptions, for repairs carried out by qualified technical personnel, please contact manufacturer. If there is any emergency happened, switch off the device first and then contact a professional.

**Note:** If you are not sure if the device is safe for you, please consult your doctor.

## 6. HOW TO USE THE NEBULIZER

### 1. Power Supply

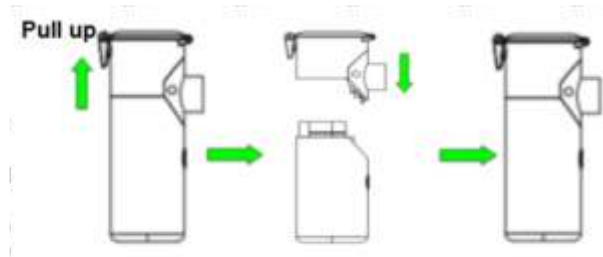
The nebulizer is powered by lithium batteries. The batteries can be charged with U S B connect to 5V DC 1A power supply with the USB cable.



Picture 2: Charging

### 2. Assembling Nebulizer

- Please clean and disinfect nebulizer before and after using it.
- Use One hand to hold the Main Unit, another hand to hold the Atomizing Cup.
- Push the cup along the slot, until the cup and the unit fit same level. (Picture 3)



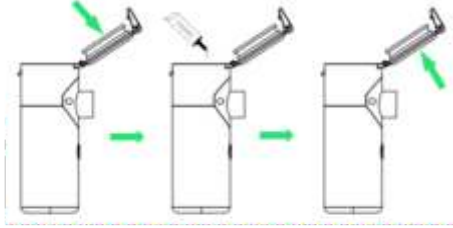
Picture3 Nebulizer Assembly

**NOTE!**

- If the Atomizing Cup isn't assembled in the right place, the device may not be able to operate normally.

### 3. Adding Medicine Liquid

- 1) Use one hand to hold the Main Unit, another to open Atomizing Cup buckle
- 2) Add medical liquid into the Atomizing Cup (Please note: Max medicine liquid is 8 ml).
- 3) Tighten the Atomizing Cup cover.



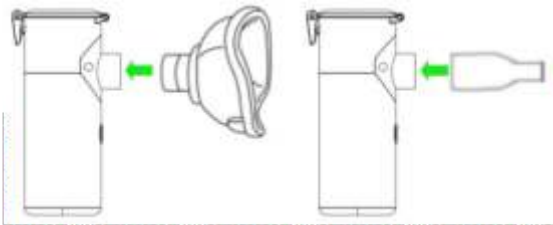
Picture 4 Add Liquid Medicine

**NOTE!**

- 1 After putting medicine liquid in, prevent nebulizer shaking or inverted which may cause the leakage of medicine liquid.
- 2 When the USB is used, remove the USB from the supply outlet before using the device.

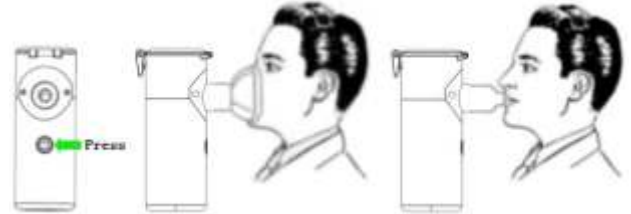
**Operation of Nebulizer**

1. Please choose appropriate accessory (Nebulizer Accessories include mouthpiece, adult mask and child mask) as you need.
2. Connect mouthpiece or connect mask as shown Picture 5;



Picture 5 Mask Assembly and Mouthpiece Assembly

3. Press operate button for 3s, the indicator light (Blue light is larger flow rate will light up and the device starts to work.
4. Press the button again for the nebulizer to work at a smaller flow rate (Blue-Green light will light alternately up).
5. Put the mouthpiece flat end into the mouth, lips slightly closed or take mask slightly close to face, better to cover nose cavity and mouth together.



Picture 6 start to atomize

6. Keep calm, relax and sit well holding the nebulizer smoothly, take deep and slow breaths and have more effective, amusing treatment.

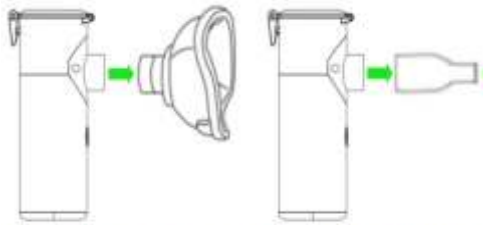
**NOTE!**

- Please use mouthpiece correctly.
- Don't spray the liquid to your tongue. Also make sure liquid does not go directly to the affected area.
- Improper gesture and unsmooth breathing may cause respiratory passage blockage.
- Slightly tilt the Main Unit toward yourself to immerse the Vibrating Mesh in the Medicine.
- When Low Voltage Indicator (Blue Light) continue to be flashing and then turn nebulizer off by itself, it means the power running out, please recharge as soon as possible.
- The dosage of medicine can be used as the physician suggested.

## 7. AFTER USE

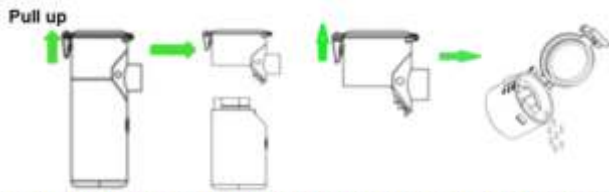


- Remove the mouthpiece or mask safely.



Picture 7 disassembly the Atomizing Cup

- Hold the Main Unit by one hand, Hold the Atomizing Cup by the other hand, remove the Atomizing Cup along the slot in picture 8;
- Open the lid, pour all the residual liquid Atomizing Cup, and promptly clean and disinfect the device, allow the parts to air dry and store the device in a clean environment. See Chapters 6 for



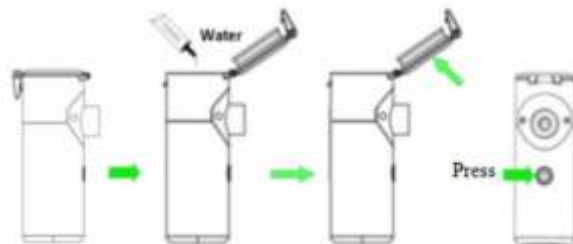
Picture 8 after use

## 8. CARE AND MAINTENANCE

### 1. Cleaning the Atomizing Cup

- Open the Atomizing Cup and discard any residual medicine.
- Pour a small amount of hot pure water (Suggest temperature is 30-60 ) into the Atomizing Cup and close the Cap;

- Press the operate button to turn on the device to nebulize the pure water for 3-5 minutes to remove residual Medicine from the mesh holes.
- Rinse the Atomizing Cup with pure water. Gently wipe off excess water with gauze and allow the parts to air dry in a clean environment.



Picture 9 cleaning

### 2. Main Unit

- Gently wipe the Main Unit with 75% medical alcohol and wipe off excess liquid with a soft clean cloth;
- Clean the electrodes connecting the Main Unit and Atomizing Cup with 75% medical alcohol, in order to make the device work normally.

### 3. Accessories (mouthpiece and masks)

- Rinse the mouthpiece and masks with pure water then boil with for 3-5 minutes.
- Gently wipe off excess water with gauze and allow the parts to air dry in a clean environment.
- You can wipe them with 75% medical alcohol and wipe off excess liquid with a soft clean cloth, and then start to use or store.

### 4. USB Charge Cable

- Wipe the USB charge cable with gauze or swabs before using. It does not need disinfection.

## 5. Maintenance Instructions



- (1) Operate the device in normal work condition.
- (2) Don't make the nebulizer and its Accessories contact corrosive liquids or gases.
- (3) Refer to Chapter 6 for solution or contact the company or purchase dealer when the device cannot work.
- (5) Please charge the device if you haven't used for more than six months.

### CAUTION!

- This is a personal medical care equipment. In order to prevent cross infection, please use it for personal use only.
- Do not wipe the Main Unit with other volatile liquid, such as Benzene or Thinner.
- Do not rinse or immerse the Main Unit in any liquid.
- Use medical gauze and medical cotton swabs to clean and disinfect.
- Do not wipe with tissue paper or other cloth, otherwise the mesh will not nebulizer normally.
- Do not wipe or touch the mesh with your hand or any other sharp object.
- Do not use other household bleach to clean the device in addition to the above solution.
- Before first and after use, please clean and disinfect the nebulizer.
- Always keep the nebulizer dry after finish using it.
- After each use, first discard all residual medicine, and remove the attachment from the Main Unit to clean and disinfect it.
- Dry the parts immediately after washing.
- Be sure to turn off the device.

## 9. STORAGE AND TRANSPORTATION

### 1. Storage & Transportation Conditions

- (1) Temperature:  $-25^{\circ}\text{C} \sim 70^{\circ}\text{C}$ ;
- (2) Relative Humidity:  $\leq 90\%$  R.H.
- (3) Air Pressure:  $70.0 \sim 106.0$  kPa;

- (1) Other requirements:
  - No corrosive gas
  - No direct sunlight,
  - Ventilation
  - No heating device
  - Open fire



### 2. Storage Instructions

- (1) Keep the device out of the reach of unsupervised children.
- (2) Clean and disinfect the device after using.
- (3) Assemble and store the device in the Storage bag or in a clean environment.
- (4) If the device has been storage at low or high temperature, the device needs more than half an hour to warm from the minimum or maximum storage temperature between uses until it is ready for intended use.

### 3. WORKING CONDITIONS

- (1) Environment Temperature:  $5^{\circ}\text{C} \sim 40^{\circ}\text{C}$ ;
- (2) Relative Humidity:  $15\% \sim 90\%$  R.H No condensation;
- (3) Air Pressure:  $70.0 \sim 106.0$  kPa;
- (4) Power: DC 3.7V lithium battery

## 10. TO PROTECT THE ENVIRONMENT

The battery is not replaceable by yourself. Do not discard the device including its accessories (mouthpiece and masks) optionally, you must contact local authorities to determine the proper method of disposal because they may have potentially biohazard.

## 11. TROUBLESHOOTING

There is something problem in using the device, please find solutions in the following table **Table 2 Troubleshooting**

PROBLEM	CAUTION	SOLUTION
Cannot turn on	1.The battery is very low 2. The equipment is damaged	1. Pls recharge in time 2. Pls contact the authorized service center or manufacturer.
	1. The handheld way is not right 2. The drug is misfit 3. The drug produces too much	1. Correct the handheld 2. The drug is too little or is unfit,for this equipment ,pls

No mist	bubble 4. The equipment is damaged	consult a doctor to use the drugs 3. Slightly shake the nebulizer until it appears the mist 4. Pls contact the authorized service center or manufacturer.
The device is on but nebulizer weakly	1. Lithium battery is not electricity 2. the mesh cap of Atomizing Cup is not clean 3. The drug is misfit 4. The sprayer module's diaphragm is damaged 5. The electrodes of the Medicine is not clean	1. Pls recharge in time 2. Clean the Atomizing Cup, if still not work properly, change a new one 3. The drug is too little or is unfit for this equipment ,pls consult a doctor to use the drugs 4. Pls contact the authorized service center or manufacturer. 5. Clean the electrodes and start
Indicate light is blue	1. The lithium battery is not enough electricity	Pls recharge in time
What drugs suitable for atomization	Consult your doctor	Under the guidance of doctors advice and use of drugs
Why will have some liquid medicine residues in the equipment after each use	Because when equipment automatically shut down, you will immediately cease inhaled liquids	Normal phenomenon
Mouthpiece ponding	Because of temperature difference, it causes a little mist spray contact with the mouthpiece when spray, but due to the lower surface temperature, condensed into water droplets.	Remove the mouthpiece ponding, and pour out the ponding.

Whether everyone use their Accessories by themselves	It must avoid cross infection.	Everyone must use their Accessories by themselves.
The Medicine of Atomizing Cup is leaking	Atomizing Cup is broken or plastic aging	Replace of new Atomizing Cup before filling Medicine

\* If you have tried the above solutions, and the device still cannot normally nebulizer, suggest contacting your dealer.

## 12. PRODUCT SPECIFICATIONS

Table3 Product Specifications

Name	Ultrasonic Mesh Nebulizer
Dimensions	Approx. 42x55x109mm
Weight	113g
Safety Grade	BF, Internally powered equipment
Power Consumption	Approx. 1.5W
Vibration Frequency	Approx. 110KHz
Nebulization Rate	0.3ml/min minimum
Medicine Temperature	≤60°C
Working Voice	≤50dB
Particle Size	2.7um+/-25%
Medicine Capacity	8ml maximum, 0.2ml minimum
Battery Life	the battery can be used for approximately 5 days after charging if operating the device for 30 minutes a day and the battery cycle life is 300 cycles.
Operating Temperature	Environmental temp: 5 °C~40°C, Relative humidity : 15~90% RH, not in Coagulation situation Air Pressure: (70.0~106.0)kPa

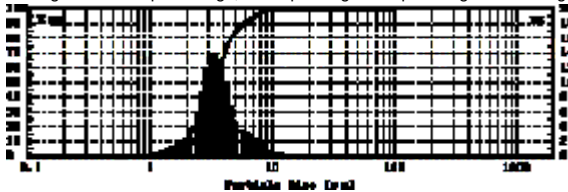


Storage and transport Temperature	Environmental temperature: -25°C~70°C Relative Humidity: ≤90%R.H. Air Pressure: (70.0~106.0)kPa
Accessory	Mouthpiece, Adult Mask, Child Mask, USB charging cable ,Instruction Manual

### Fog particle equivalent volume (Picture 10)

#### NOTE!

- 1) It was tested by 0.9% physiological saline under the condition of temperature 25±3°C ,humidity60%±5%R.H.
- 2) The horizontal line is particle diameter, the data are the logarithm Distribution; Left vertical line is cumulative percentage of volume, corresponding to the curve upward trend; Right vertical line is a range of volume percentage, corresponding to Graph histogram or rolling.



Picture 10 Fog Particle Equivalent Volume

### 13. THE NEBULIZER PASSED THE FOLLOWING STANDARD TEST

NO.	ITEM	STANDARD
1	Electrical safety	ANSI/AAMI ES60601-1:2005/(R)2012 and A1:2012, C1:2009/(R)2012 and A2:2010/(R)2012 Medical electrical equipment - Part 1: General requirements for basic safety and essential performance (IEC 60601-1:2005, MOD)
2	EMC	IEC 60601-1-2 Edition 4.0 2014-02 Medical electrical equipment - Part 1-2: General requirements for basic safety and essential performance - Collateral Standard: Electromagnetic disturbances - Requirements and tests

3	Household	IEC 60601-1-11 Edition 2.0 2015-01 Medical electrical equipment - Part 1-11: General requirements for basic safety and essential performance - Collateral Standard: Requirements for medical electrical equipment and medical electrical systems used in the home healthcare environment
4	Cytotoxicity (GLP)	ISO 10993-5 Third edition 2009-06-01 Biological evaluation of medical devices - Part 5: Tests for in vitro cytotoxicity
5	Sensitization (GLP)	ISO 10993-10 Third Edition 2010-08-01, Biological Evaluation Of Medical Devices - Part 10: Tests For Irritation And Skin Sensitization.
6	Irritation or intracutaneous reactivity (GLP)	ISO 10993-10 Third Edition 2010-08-01, Biological Evaluation Of Medical Devices - Part 10: Tests For Irritation And Skin Sensitization.
7	Acute Systemic Toxicity (GLP)	ISO 10993-11 Third edition 2017-09 Biological evaluation of medical devices - Part 11: Tests for systemic toxicity
8	genotoxicity (GLP)	ISO 10993-3 Third edition 2014-10-1 Biological evaluation of medical devices - Part 3: Tests for genotoxicity, carcinogenicity and reproductive toxicity
9	Implantation (GLP)	ISO 10993-6 Third edition 2016-12-01 Biological evaluation of medical devices -- Part 6: Tests for local effects after implantation
10	Exposure Assessment (GLP)	ISO 18652-1 First edition 2017-03 Exposure Assessment for Dry Gas Pathway
11	particulate matter (GLP)	ISO 18562-2 First edition 2017-03 Biocompatibility evaluation of breathing gas pathways in healthcare applications - Part 2: Tests for emissions of particulate matter
12	Gas Emission VOC (GLP)	ISO 18562-3 First edition 2017-03 Biocompatibility evaluation of breathing gas pathways in healthcare applications - Part 3: Tests for emissions of volatile organic compounds

## 14. PACKAGE CONTENTS



In the Dr Trust Mesh Nebulizer- 406 package, you will find the following parts;

- Mesh Nebulizer Main Unit with Atomizing Cup
- Accessories (Mouthpiece and 2 Masks).
- Instruction Manual
- USB Charging Cable

## 15. CUSTOMER SUPPORT



### CONTACT ADDRESS

#### USA

NURECA INC.USA

276 5th Avenue, Suite 704-397, New York (NY) - 10001, USA

#### INDIA

##### Corporate Office (Mumbai)

Nectar Biopharma Pvt Limited

Quest Offices, The Parinee Crescenzo, C38-39, G Block,

8th floor, B Wing, Bandra Kurla Complex, Bandra(E)

Mumbai, Maharashtra 400051

#### Call On

**USA: +1 212-634-4563**

**India (Toll free): 18002709565**

**Website:** [www.drtrustusa.com](http://www.drtrustusa.com)

**Email:** [customercare@nureca.com](mailto:customercare@nureca.com)

#### Connect with us on social networks

**Facebook:** @drtrust

**Instagram:** @drtrustisin

**Youtube:** NurecaUsa

COPYRIGHT© 2019 DR TRUST. ALL RIGHTS RESERVED