

• ABOUT US •

Driven by the passion for innovation, we at Dr Trust endeavour to provide our customers with the latest medical inventions with an objective to promote good health and wellness all around the world. All the medical devices and health monitors provided by Dr Trust are supported by accurate, latest and ground breaking technologies, innovated at our headquarter in NY, USA. All our products adhere to the most stringent CE and FDA guidelines and are strongly recommended by doctors and health practitioners. Our products are designed in the utmost exemplary ways to ensure that their accuracy and convenience are unrivalled. The ease of their use and operation makes them even more suitable for users of all age groups.

Dr Trust strives to enhance the quality of lifestyle by providing with the most trusted and innovative health care and wellness products. Being a renowned global leader in health care products, Dr Trust ensures that our technically efficient team works dynamically and tirelessly to provide the best of the medical devices to our clients. The products that we have to offer are suitably designed for use at homes, laboratories and hospitals.

Our ground breaking solutions allow you to monitor your health in the easiest ways possible. In today's era when all of our lives are too hassled to handle, it becomes a bit difficult to pay attention to our health. But it has now become easier with the coming of the monitoring devices which can be conveniently used at homes and even on the go.

We bring to you a variety of best self medical devices, trusted and used by Doctors, medical professionals and home users all over the world.

Dr Trust

3-in-1 Nano Ionic Facial Steamer Humidifier and Towel Warmer-902 (Blue)

• QUICK STARTUP GUIDE •

IMPORTANT

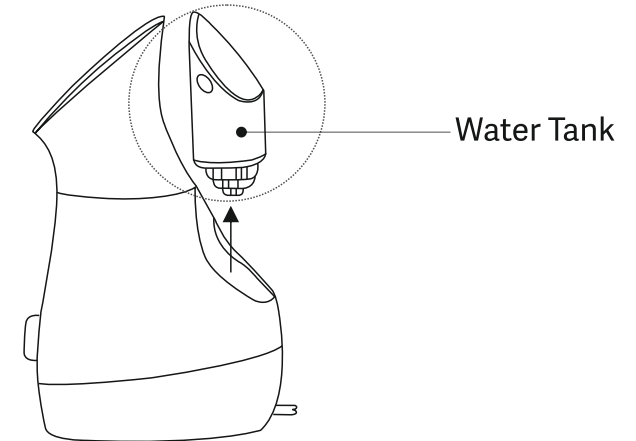
This product is intended for household use only.

Step 1

Place the steamer on a flat solid surface.

Step 2

Remove the water tank from the main unit and fill it with distilled and purified water.



Step 3

Insert the water tank back into the main unit and plug into a power outlet for using it as steamer.

Step 4

Rotate the switch to turn on and setting to Facial Steamer, Warm Towel, and Humidifier settings as per your preferences.



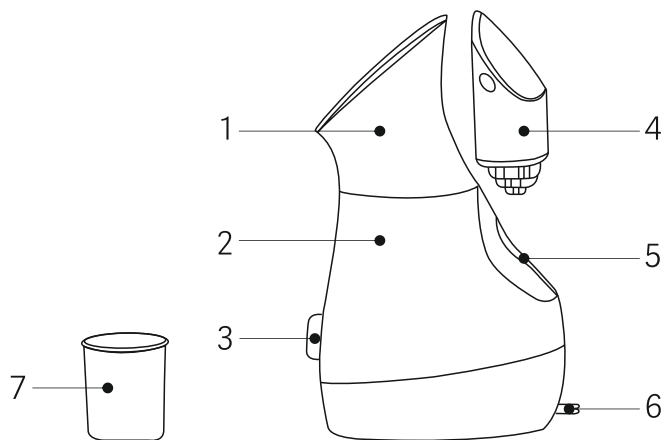
902

• INTRODUCTION •

Dr Trust 3-in-1 Nano Ionic Facial Steamer set the skin for exfoliation and to have the maximum benefits of other targeted treatments. It infuses the skin with moisture and opens pores to make it more receptive to active ingredients. It allows better penetration of these ingredients deep into the skin for better results.

• PARTS IDENTIFICATION •

1. Steamer head
2. Steamer body
3. Rotary switch
4. Water tank
5. Water reservoir
6. Power line
7. Beaker



• ⚠️ IMPORTANT SAFEGUARDS •

When using electrical appliances, some basic safety precautions should always be followed to reduce the risk of electric shock and injury.

- Do not use while bathing.
- Do not use this product near a sink, or any vessel containing water.
- Do not place it into water or any other liquid.
- Do not use the appliance with wet hands.
- Unplug immediately if it has been dropped into the water or any other liquid.
- Plug-in correctly to corresponding power source.
- Do not leave the appliance unattended when in use.
- Do not allow children to operate it.
- Do not use it outdoor.
- It should be used only for its intended purpose as described in this manual.
- Do not use attachments that are not recommended by the manufacturer.

IMPORTANT: Always ensure the appliance is operated on an electric power source matched to the rated voltage indicated on Ensure that the plug and appliance plug are plugged the appliance in completely. Always switch off and unplug this appliance immediately after using it.

• OPERATING INSTRUCTIONS •

Placing the Unit Safely

Step 1.

Take out the Dr Trust 3-in-1 Nano Ionic Facial Steamer from box and place it on a flat, level, and solid surface, such as a desk, etc.

Step 2.

Do not hold the appliance in your hands during use.



Removing the Water Supply Tank from The Main Unit

Step 1

Remove the water tank from the main unit.

Step 2

Turn and open the water supply cap.

Step 3

Fill up the water tank with distilled and purified water.

Step 4

Close the water supply cap and put back tank into the water reservoir.

Step 5

Wipe away any water on the surface of the water supply tank.

Step 6

Always turn off the power when adding water in the tank.

IMPORTANT

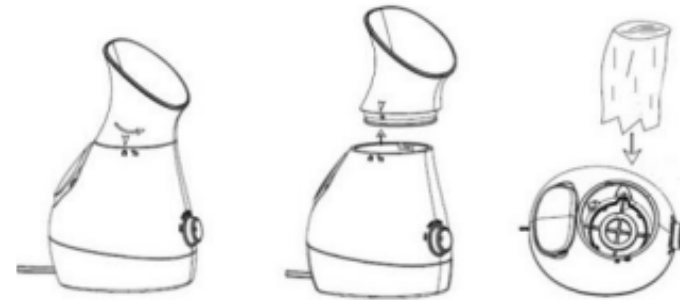
Do Not Operate

- *If it has a damaged cord or plug.*
- *If it is not working properly.*
- *If it has been dropped or damaged.*
- *If its air vents are not working properly or blocked by lint and hair, etc.*
- *If the cord or plug becomes hot.*
- *If it is not plugged-in correctly.*

• USAGE •

1. Warm Towel

Rotate the steamer head counter clockwise and let the arrow to the unlocking position and then remove the head.



- Fold a wet 100% cotton small face towel neatly and put it into the steamer body.
- Rotate the steamer head to locking position.
- Plug in and then rotate the switch to the warm towel position. It will warm towel in 2 minutes.
- Pick the towel up with forceps and allow it to cool down to a comfortable temperature to use easily on your face.

2. Steaming Face

- Plug in and then rotate the switch to the face steaming.
- The light around switch will turn to blue and the steam start releasing after about 1 minute.



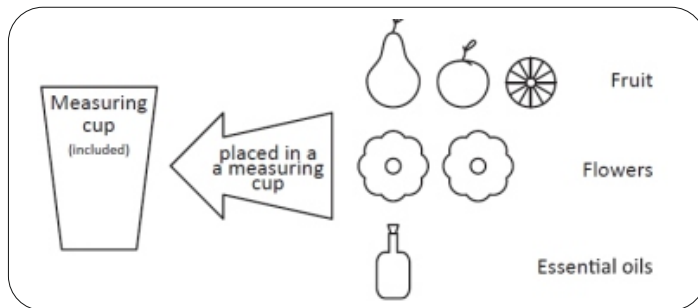
How to Properly Do a Steaming?

- Keep your face at least 25 cm (10") away from the nozzle.
- When using the appliance for the first time, feel the steam temperature at 25 cm. Far from the steam outlet by hand, and then move your face to the proper position for steaming.
- To ensure that the steam covers your entire face, direct the steam to the top of your chin.



3. Fruit Sauna Function

- Put some fruit or flower into the beaker.
- Remove the steam head and place the beaker inside of the unit.
- Lock the head and steam the face refer to how to use the steamer.



4. Air Humidification

- Put the water tank filled with water and then rotate the switch to humidifier position.
- One full water tank can deliver hot steam for 40 minutes.

- It can be used as a humidifier in the dressing room, bedroom, or any other small area to clean air.

IMPORTANT: Turn the rotary switch off position after use.

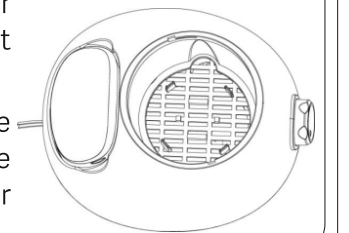
SPECIFICATIONS

Power Source	220 V, 50 Hz
Power Consumption	600 W
Approx. Steam Discharge Rate	13-14g/min at warm towel and facial steamer function, 6-7g/min at humidifier function.
Approx. Steam Temperature	43 °C (107 °F) (at a distance of approx. 25 cm (10") from the edge of the nozzle)

CARE & MAINTENANCE

Clean the main unit once a month to prevent water scale deposits, mineral build up and steam with bad smell inside.

- Mix a solution of 50% vinegar and 50% water and add them into water tank, and then heat up for 15 minutes.
- Remove the plug, water tank and also the steamer head, and pour clean water into the Steamer body inner cavity, pour out after cleaning.



Ensure Your Safety

- Always unplug when performing maintenance.
- Failure to do so may result in accident, electric shock or injury.
- Periodically clean to ensure dust does not accumulate on the appliance plug as it may cause the insulation to fail.
- When storing, do not wrap the power cord around the appliance. Doing so may cause deformation of the cord, and appliance failure.
- Always use the power cord specific to the appliance. In addition, do not use the power cord with any other appliance.

CAUTIONS

- Do not damage, modify, unreasonably bend, pull, or twist the cord.
- Do not use the device if you are pregnant or currently in a menstrual period as it may cause skin problems due to hormone imbalance.
- Do not place anything heavy on the cord and do not pinch the cord. Do not use the appliance if you are unable to feel heat.
- Do not use or store the appliance in the bathroom or in other rooms with high humidity.
- Do not use if you have allergies.
- Do not allow infants to reach the appliance.
- Do not use the appliance near flammable substances (alcohol, thinner, benzene enamel remover, aerosol sprays, etc).
- Do not drop or insert any object into any opening.
- Always place it in a location that is out of the reach of infants.

CUSTOMER SUPPORT

CONTACT ADDRESS

USA

Nureca INC.USA
276 5th Avenue, Suite 704-397,
New York (NY) - 10001, USA

INDIA

Corporate Office (Mumbai)

Nureca Limited
128 Gala Number Udyog Bhavan,
1st Floor Sonawala Lane, Goregaon East
Mumbai City Maharashtra 400063

Contact us

India: +91-7527013265 /+91-9356658436

Website: www.drtrust.in

Corp Website: www.nureca.com

Email: customercare@nureca.com

Connect with us on social networks

Facebook: @drtrust

Instagram: @drtrustisin

Youtube: NurecaUsa

COPYRIGHT ©2021 NURECA LTD ALL RIGHTS RESERVED



Scan to View
Product Demo Video
www.drtrustusa.com/902